



WELLTECH

WellGate 3802/3804/3806 FXO

Converge PSTN and VoIP Services into a Network

An easy access to PSTN from IP world



WellGate 3802/3804/3806 FXO gateway behaves as a bridging between local PSTN and IP network for voice and FAX services. It smoothly transport voice and FAX services between PSTN and IP network without any distortion.

The WellGate 3802/3804/3806 gateway provides voice and fax services over IP network with H.323 v3 protocol. By connecting with your existing ADSL or cable Modem service, it allows the use of a single network for voice and fax services with consequent saving in network infrastructure and greatly reduced telephone charges. Ideal solution for providing low cost communications between head quarters and branch offices in the world, as well as for SOHO and office telephony applications.

The WellGate 3802/3804/3806 provides up to two/four/six FXO ports connecting to local PSTN. It is an interface to access PSTN with IP-PBX solution. A 10Base-T interface connects local Ethernet network with IP Phone and H.323 Gatekeeper or Call Manager. The data and voice services are working in a local Ethernet network. The TOS setting of WellGate 3802/3804/3806 provides voice priority in IP network.

Using two wire loop start Foreign Exchange Office (FXO) interfaces, WellGate 3802/3804/3806 FXO gateway convert packetized Voice and FAX to local circuit switching PSTN network. It also converts the voice and fax traffic to IP network with packetized form. The packetized data is sent via an Ethernet connection to IP network.

WellGate 3802/3804/3806 provides management features for system Configuration, Debug and Maintenance via RS-232C COM port and TELNET.

Application

- IP-PBX access to local PSTN call
- Dialing PSTN call from carrier-based IP network
- PSTN to PSTN call via IP network
- Saving cost for international or long distance call
- ITSP (Internet Telephony Service Provider)
- Multi-nation Enterprise
- SOHO
- Office telephony services

Benefits

- Easy access to PSTN from IP
- Cost saving - save long and international call expense by using IP network.

- No extra investment - just take advantage of existing Ethernet LAN and IP environment.
- Easy interface with Cable Modem, ADSL Modem and Leased Line equipment

Features

- ITU-T H.323 v3/SIP compliance(**)
- Behind NAT router or IP sharing device
- Automatically Gatekeeper Discovery
- Provide peer-to-peer mode (Non Gatekeeper needed)selection
- Support auto-attendant (Tone or voice greeting)
- Line hunting
- PSTN Polarity Reversal Detection
- Provide 2nd dial tone to PSTN
- E.164 Common Dial Plan
- DTMF Dialing
- DTMF detection / generation
- TFTP software upgrade
- Remote configuration / reset
- LED indication for system status
- LAN interface : One RJ-45 connector for 10Base-T
- MS-NetMeeting v3.0 compatible
- Support Fix IP and DHCP
- Provide QOS function with TOS (Type of Services) setting
- Provide T.38/FAX and voice Auto-Switching

Audio Feature

- Codec -- G.711 A/u-Law, G.723.1, G.729A,G729
- VAD (Voice Activity Detection), CNG (Comfort Noise Generate)
- G.168/165-compliant adaptive echo cancellation
- Dynamic Jitter Buffer
- Bad Frame Interpolation
- Up to six FXO analog port
- Completed voice band signaling support
- Receive Caller ID (DTMF or FSK) from PSTN
- Provide Inband or Outband DTMF generation/detection between LAN and PSTN interface
- Call Transfer (H.450.2)
- Call Hold (H.450.4)
- Gain/Attenuation Settings
- Provide Progress Tone: Dial tone, busy tone, call-holding tone and ring-back tone

WellGate 3806

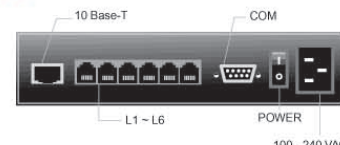
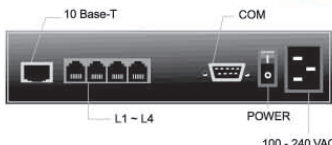


Dimensions: 221mm(W)*42mm(H)*217mm(L)
Weight : 1.4 kg

WellGate 3804



Rear Panel Drawing



Technical Specification

Interface

- A 10BaseT Ethernet RJ45 port
- Asynchronous Console RS-232C DB-9 connector
- Two Analog PSTN (FXO)RJ-11port for WellGate 3802 only
- Four Analog PSTN(FXO)RJ-11port for WellGate 3804 only
- Six Analog PSTN(FXO)RJ-11port for WellGate 3806 only
- AC power input outlet
- AC power switch

Management Fures:

- Two easy ways for system configuration
- Console port : RS-232C port
 - TELNET

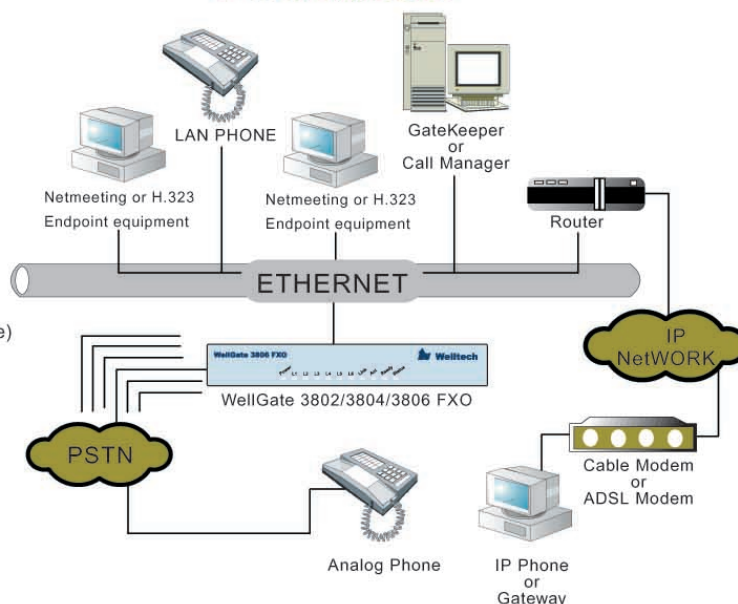
Certification:

- For WellGate 3802/3804-
- CE,FCC part 15,TBR21, FCC Part68,ETL(the same as UL)

LED indicator for system status

- L1 to L2 : LED indicator for PSTN port 1-2 status for WellGate 3802 only
- L1 to L4 : LED indicator for PSTN port 1-4 status for WellGate 3804 only
- L1 to L6 : LED indicator for PSTN port 1-6 status for WellGate 3806 only
- POWER : Power ON indication
- LINK/ACT : 10Base-T status
- STATUS : WellGate 3802/3804/3806 register to GateKeeper status
- READY : WellGate 3802/3804/3806 works status

IP-PBX Application



Welltech Computer Co., Ltd.
13F-4, No.150, Jian Yi Road,
Chung-Ho, Taipei,Taiwan
Tel: +886-2-82265699
Fax: +886-2-82265799
E-mail: sales@mail.welltech.com.tw
Http://www.welltech.com.tw

(**):Contact Welltech for availability of SIP protocol.